

HAPPY
Holidays!

HAPPY BIRTHDAY



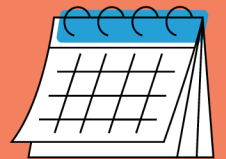
December

12/2 - Brian
12/4 - Mellisa
12/5 - John
12/5 - Sidney
12/5 - Ryan
12/7 - Nick
12/13 - Marcello
12/17 - Lori
12/23 - Ryan

January

1/2 - Paul
1/13 - Elijah
1/27 - Elizabeth
1/29 - Amy
1/30 - Mathieu
1/31 - Robert

CALENDAR



- **12/5:** Hilton Head Christian Academy @ PEP
- **12/6:** PEP's 30th Anniversary Gala
- **12/9:** Sun City Cloggers @ 1:00 PM
- **12/10:** Hilton Head Christian Academy @ PEP
- **12/12:** Isla J Farms @ PEP w/ animals @ 9:30 AM
- **12/16:** Sun City Ukuleles @ 12:30 PM
- **12/19:** Sun City Singers @ 1:00 PM
- **12/22:** Piano Christmas Concert @ 12:30 PM
- **12/23:** Member Christmas Party
- **12/24:** Closing early @ 12:00 PM
- **12/25 - 12/26:** Closed for Christmas
- **1/1:** Closed for New Year's Day

MEMBER OF THE MONTH - DECEMBER



Congratulations to Trenton, our Member of the Month for December!

We have absolutely loved getting to know Trenton, and he has quickly become a special part of our PEP family.

Trenton enjoys music class, watching Charlie play the guitar, and spending time with his friends. He loves jumping up and down to his favorite songs, and his bright spirit shines wherever he goes!

We're so proud to celebrate you this month, Trenton!

MEMBER OF THE MONTH - JANUARY



As we welcome the New Year, we're excited to highlight our member Corey as January's Member of the Month!

Corey has been a staple here at PEP for many years and serves as our dedicated PEP Pottery Assistant. The pottery studio is truly his happy place, and it's where you can find him most days.

Corey plays an essential role in keeping the studio running smoothly — from loading and unloading the kiln, to tracking class attendance and projects, to collaborating with our pottery volunteers to

create new and inspiring items for our storefront. His hard work, creativity, and enthusiasm shine in everything he does.

We are so proud of you and all you have accomplished!

MEDICAID

In order for PEP members to meet required hours for Medicaid billing, they **must** be at PEP between the hours of 9:30am-2:30pm.

If you are able, please consider appointments and drop off/ pick-ups before or after the times posted above.

Thank you for your continued support of PEP and our members.



REVIEW PEP

We love being part of your journey and would be so grateful if you could take a moment to leave us a review on Facebook and/or Google!

Your feedback helps teach about PEP and the community we've built together.

REVIEW



GALA TICKETS

We hope you can celebrate with us at the PEP 30th Anniversary Gala!



**Saturday,
December 6, 2025** | 6 PM
Tickets: \$100 for Members

What can you expect at our 30th anniversary gala?

- Online Silent Auction featuring almost 200 gift certificates to /items from local restaurants, boutiques, experiences, shops and more! The Silent Auction will open on November 24 and close on December 8 at 6:00 PM!
- Live auction during the event featuring even more exciting packages to be talked about for years to come!
- Raffle tickets to win a David Yurman bracelet
- Special Performance by the Hilton Head Dance Theater
- Entertainment & dancing provided by The Target Band

View flyers at the end of this newsletter for clickable links to purchase tickets, view auction items, and/or purchase raffle tickets.

PEP MEMBER EMPLOYEE SPOTLIGHT

December

This month, we are excited to celebrate Sidney for her hard work, creativity, and dedication.

She spends most of her time in the pottery studio, where she loves sculpting, glazing, and learning new pottery skills.

Sidney brings enthusiasm and a joyful spirit to everything she does, and her passion for her work truly shines.

We are proud of you, Sidney!

Keep up the amazing work!



January

This month, we are proud to celebrate Adam!

Adam is a dedicated, hard-working member of our team and someone we can always rely on to complete any task given to him. He is a true team player and one of his peers' biggest cheerleaders.

Adam has also shown strong leadership qualities, often stepping in to help train and guide his peers. His positive attitude, reliability, and commitment shine every day.

Congratulations, Adam!



HOLIDAY CLOSINGS

DECEMBER

- **12/24:** PEP Closes at 12:00 PM**
- **12/25:** PEP Closed for Christmas
- **12/26:** PEP Closed for Christmas

JANUARY

- **01/01:** PEP Closed for New Year's Day

***Please expect members home early and if they need picked up, please pick up by 12:30 pm.*

GRANTS & GIFTS

PEP is so grateful to have the support of so many businesses and individuals in our community. We could not fulfill our mission without them. We have recently received contributions from the following communities and groups:

- **Moss Creek Community Charitable Fund**
- **Dabo's All In One Team**
- **Post & Courier Foundation**
- **Lambert Foundation**

PEP MEMBER CHRISTMAS PARTY



The Christmas party for PEP members will take place on

December, 23!

Mark those calendars!

MEET KAYLA

You may hear staff talk about Kayla, but many haven't met her!

Kayla lives in Kalamazoo, Michigan and manages PEP's social media, monthly newsletter, and website updates behind the scenes. She has supported PEP over the last five years.

She helps share our stories, celebrate members, and keep families and supporters connected.

When you see our posts online, that's Kayla helping PEP shine!



NANCY'S NOTE

A NOTE FROM THE EXECUTIVE DIRECTOR

Dear PEP Families,

As we wrap up another year together, I want to extend a heartfelt thank you for filling our Thanksgiving Friends & Family event with so much warmth and community. Seeing our members and their families together reminds us why PEP is such a special place.

Our **Silent Auction is officially live at event.gives/pep2025**, and we'd love for every family to take part! There are some truly amazing items this year—perfect for holiday gifting, treating yourself, or simply supporting the programs that mean so much to our members. Your participation directly strengthens PEP's mission, and we are so grateful for every bid and share.

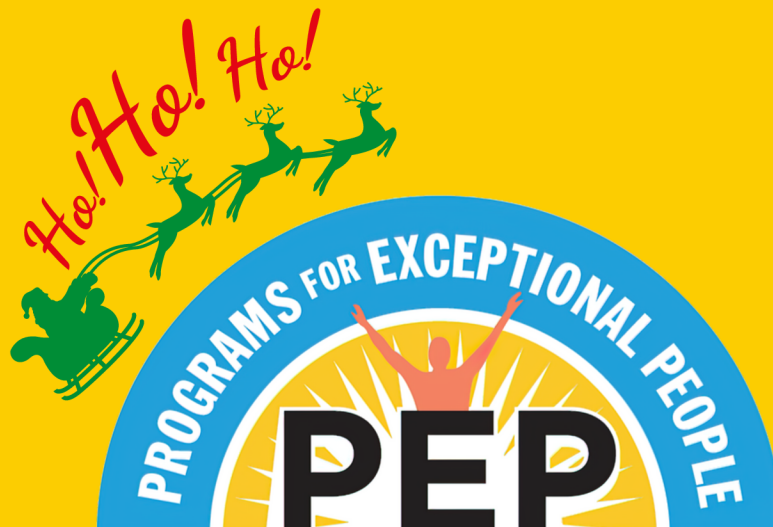
Looking ahead, we're filled with excitement and optimism. **2026 promises even more opportunities, new connections, and continued growth** for our members, our staff, and our entire PEP family. Thank you for being part of this community and for helping us make PEP a place where everyone belongs and thrives.

Wishing you and your loved ones a wonderful holiday season and a bright New Year!

Warmly,

Nancy

*P.S. PEP members and their families will receive a discount of \$5 off the 2 pm SENSORY FRIENDLY PERFORMANCE of Frozen at the Arts Center of Coastal Carolina this Saturday. A life-sized Sven (the reindeer) and Olaf (the snowman) will be at the show! To receive the discount, they just need to call the box office to book their seats: (843) 842-2787. **(See flyer below)***



MEMBER MEMORIES



Happy
Thanksgiving



PEP provides programs that promote independence, social interaction, education, and employment opportunities for adults who live with unique intellectual, physical, and developmental disabilities.

WHO DO I CONTACT?

Need assistance? We've got you covered!

If you have any questions or concerns, give us a call at **(843) 681-8413** and ask for the appropriate admin. We're here to help and make sure you get the answers you need!

Administration Contact List

Name	Title	Email
Nancy Sulek	Executive Director	Nancy.Sulek@pephhi.org
Falisha Dublin	Program Director	Falisha.Dublin@pephhi.org
Carey Fortner	Administrative Assistant	Carey.Fortner@pephhi.org
Megan Drew	Compliance and Billing Specialist	Megan.Drew@pephhi.org
Ally Burnett	Program Administrator	Allison.Burnett@pephhi.org
Robert Mueller	Facilities and Transportation Manager	Robert.Mueller@pephhi.org
Akina Benton	Assistant Program Director	Akina.Benton@pephhi.org