

APRIL 2026 NEWSLETTER

MEMBER OF THE MONTH



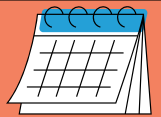
Nick is a big-hearted, sunshine-in-human-form kind of friend who makes everyone around him feel special. With kindness in everything he does and a smile that's always ready to go, he's the kind of person people are lucky to have in their corner. Whether he's having a blast talking about wrestling or coloring bright, cheerful pictures to give to his friends, Nick puts his whole heart into making others happy. He's thoughtful, fun, and full of warmth he's a true superstar.

HAPPY BIRTHDAY

- 4/2:** Kiki
- 4/11:** Aaron
- 4/15:** Sloan
- 4/24:** Cole
- 4/25:** Corey



CALENDAR



- 4/02:** Bluffton Farmer's Market
- 4/06:** Bluffton Farmer's Market
- 4/9:** SCAD Back40 Garden Field trip
- 4/10:** SCAD Art museum trip
- 4/22:** PEP Earth Day Clean Up @ Fish Haul Beach
- 4/30:** Bluffton Farmer's Market
- 5/21:** PEP Open House

BIRDIES FOR CHARITY

The 2026 RBC Heritage Birdies for Charity program will match 20% of your donation through April 19!

This special giving opportunity lets you pledge a donation for every Birdie made at the RBC Heritage presented by Boeing tournament or make a flat donation of \$25 or more. When you designate PEP as your charity of choice, we receive 100% of your donation - plus an additional 20% match from the Heritage Classic Foundation!

[CLICK TO PLEDGE NOW](#)

Pledge Now

Support
Local Charities



PEP MEMBER EMPLOYEE SPOTLIGHT

Mike is an incredibly dependable and hardworking individual who brings such a positive, uplifting energy to everything he does.

He's always ready to lend a hand, no matter how big or small the task, and genuinely takes pride in supporting those around him.

His willingness to step up, combined with his can-do attitude and thoughtful nature, makes him someone his teammates can always count on.



GRANTS & GIFTS

PEP is so grateful to have the support of so many businesses and individuals in our community. We could not fulfill our mission without them. We have recently received contributions from the following communities and groups:

- **TideWatch Vacations, Principal Advisors and MX Project Pros** - These businesses along with the generosity of their clients, customers and vendors, raised \$10,000 for SOAR, PEP, and Pockets Full of Sunshine in recognition of National Developmental Disabilities Awareness Month. PEP attended their annual Burger Bash and has received a \$3,333 portion of the proceeds raised from the event.



PLEASE LABEL

Please write your member's name(s) on all jackets, hats, lunch boxes, etc. that are sent to PEP.

NAME :



VOLUNTEER SPOTLIGHT

A standing ovation for the incredible Jeanne Cosentino and Sue Johnson our amazing volunteers! Their infectious energy and unwavering kindness light up every room and bring so much joy to our members. We are endlessly grateful for their dedication, their smiles, and the way they make everyone feel welcomed and cared for, we appreciate them bringing in the fantastic Margaritaville line dancers and look forward to another visit.

We ♥ our Volunteers

HERITAGE RAFFLE

Congratulations to Freddi Hoffmann who won the two Heritage Sunday tickets.

Thank you to all who purchased tickets for the raffle!

JOB EXPO

We had a great time representing PEP at the job expo at USC Beaufort!

It was a fantastic opportunity to share more about what we do and connect with students and job seekers who are passionate about making a difference.

A big thank you to USC Beaufort, SCAD, TCL, and Savannah State University for hosting such a well-organized and impactful event.

We're grateful to have been part of it!



NANCY'S NOTE

A NOTE FROM THE EXECUTIVE DIRECTOR

Dear PEP Families,

Spring is in full swing at PEP, bringing fresh energy, a blossoming garden, busy days, and so many reasons to celebrate! Our programs continue to grow this time of year, and it's always a joy to see our members engaged, active, and enjoying our programs as we head outside more often! You'll also see us at the **Bluffton Farmers Market** occasionally on Thursdays selling our cookbooks and pottery. Please stop by and say hello.

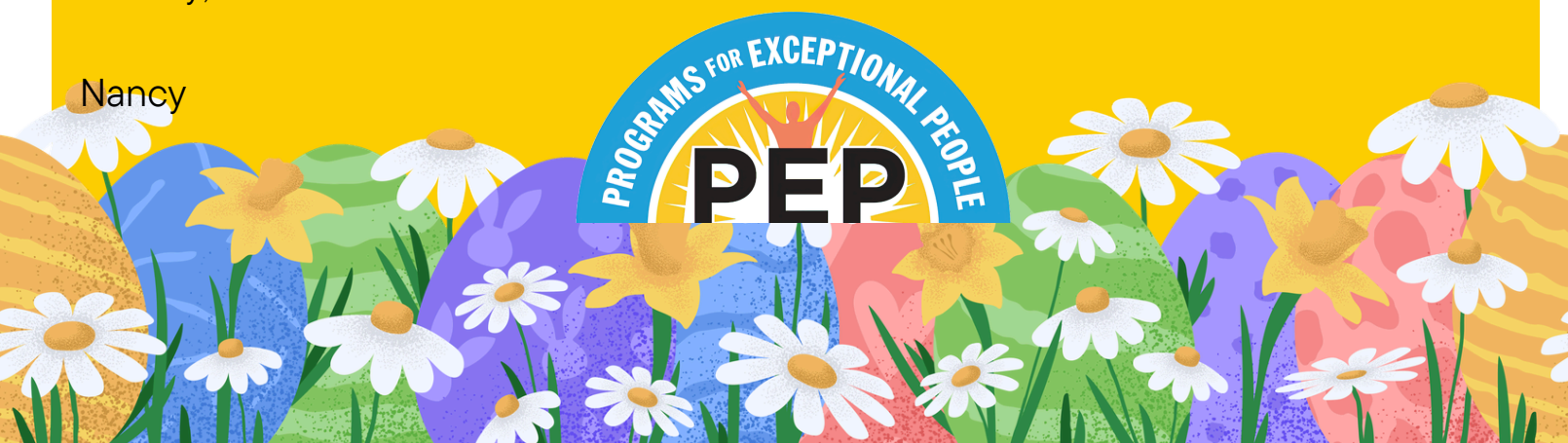
Be sure to mark your calendars for two exciting upcoming events! We invite you to join us for **PEP's Open House on Thursday, May 21st**, a wonderful opportunity to see our programs in action and share PEP with friends and family. And looking ahead to the fall, **save the date for "Boots, Barbeque & Oysters" on Saturday, October 24th** which will be one of our favorite events of the year! If you'd like to be part of the planning committee as we kick things off, please let me know as we'd love to have you involved.

We also have some very special news to share - **Megan welcomed a beautiful baby girl** on March 25, weighing 6 lbs. 12 oz.! We are so happy for her and her growing family and can't wait to meet the newest addition to the PEP family.

As always, thank you for being such an important part of our community.

Warmly,

Nancy



MEMBER MEMORIES



PEP provides programs that promote independence, social interaction, education, and employment opportunities for adults who live with unique intellectual, physical, and developmental disabilities.

WHO DO I CONTACT?

Need assistance? We've got you covered!

If you have any questions or concerns, give us a call at **(843) 681-8413** and ask for the appropriate admin. We're here to help and make sure you get the answers you need!

Administration Contact List

Name	Title	Email
Nancy Sulek	Executive Director	Nancy.Sulek@pephhi.org
Falisha Doublin	Program Director	Falisha.Doublin@pephhi.org
Carey Fortner	Administrative Assistant	Carey.Fortner@pephhi.org
Megan Drew	Compliance and Billing Specialist	Megan.Drew@pephhi.org
Ally Burnett	Program Administrator	Allison.Burnett@pephhi.org
Robert Mueller	Facilities and Transportation Manager	Robert.Mueller@pephhi.org
Akina Benton	Assistant Program Director	Akina.Benton@pephhi.org