

MAY 2026 NEWSLETTER

ENHANCING THE LIVES
OF SPECIAL NEEDS ADULTS

MEMBER OF THE MONTH



Cole has this effortless charm about him—he's genuinely sweet, naturally funny, and always knows how to lighten the mood. Being around him feels easy because he has a way of making people laugh without even trying too hard, and that kind of warmth tends to stick with people.

HAPPY BIRTHDAY

Tiffany 5/2

Karl 5/5

Gary 5/9

Chip 5/10

Kara 5/10

Tim 5/13

Peggy 5/23

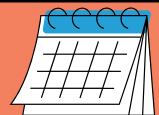
Abigail 5/25

Ryan C 5/26

Courtney K 5/27



CALENDAR



5/4: Bookmobile @ 12:30

5/7: PEP selling Pottery at the Farmer's Market

5/8: Knights of Columbus Picnic @ 11:00 **and**
Palmetto Pops @ 1:00

5/18: Bookmobile @ 12:30

5/19: Sun City Ukuleles @ 12:30

5/21: Open House 3:30 - 5:30

5/22: Staff Inservice Day - Members dismissed
at 12:00

5/25: PEP Closed for Memorial Day

5/28: PEP selling pottery at the Farmer's Market

PLEASE LABEL

Please write your member's name(s) on all jackets, hats, lunch boxes, etc. that are sent to PEP.

NAME :

PEP MEMBER EMPLOYEE SPOTLIGHT

Karl is a genuinely hard worker, someone who stays focused, puts in steady effort, and follows through on what he starts. He takes pride in doing things well, and it shows in how dependable and committed he is day in and day out.



VOLUNTEER SPOTLIGHT



Karen is truly amazing! She is someone who gives her time and energy so generously as a volunteer. She shows up with a positive spirit, puts her heart into helping others, and makes a real difference through her dedication. Our members love their time with her!

OPEN HOUSE

**HELP
NEEDED**

THURSDAY, MAY 21

We're looking for volunteers to help staff the event and bring finger foods or beverages (water, soft drinks, etc.). If you're able to help, please email Falisha with how you'd like to contribute and what you plan to bring.

CLOSURES



Reminder!

PEP will close early on Friday, May 22 at 12:00 PM due to staff training.

PEP will also be closed on Monday, May 25 for Memorial Day.

Please mark your calendars.

GRANTS & GIFTS

PEP is so grateful to have the support of so many businesses and individuals in our community. We could not fulfill our mission without them. We have recently received contributions from the following communities and groups:

- **JSLB (Junior Service League of Beaufort)**
- **Friends of Callawassie Island**

thank you!

MEMORY MATTERS: FRIDAYS FOR CAREGIVERS

May 2026: **Dementia & Dental Care with Guest Speaker Dr. Aaron Bliley, DMD**

Whether you're supporting a parent, spouse, friend, or simply noticing changes in someone you care about, having access to the right information can make all the difference.



Memory Matters offers a free monthly program called Fridays for Caregivers, a supportive, educational Zoom series designed to provide practical guidance, trusted resources, and a sense of connection.

- **Topic:** Dementia & Dental Care, featuring Dr. Aaron Bliley, DMD
- **When:** Thursday, May 8 at 11:00 AM (ET)
- **Where:** Live on Zoom (link sent after you register)
- **Cost:** Free
- **Who:** Exclusively for non-paid family caregivers
- **Recording:** Yes, a link will be provided following the event
- **Questions in advance?** Email zoe@mymemorymatters.org

What this session will cover:

- Common dental concerns for individuals living with dementia
- Practical tips for helping with daily oral care
- Signs that indicate it may be time to seek professional care

The program is **free, live**, and open to non-paid family caregivers. Whether you join yourself or share with someone who may benefit, we hope you'll take advantage of this resource.

Please feel free to forward this invitation to a friend, neighbor, or family member, sometimes the right information arrives at just the right time.

See flyer below

NANCY'S NOTE

A NOTE FROM THE EXECUTIVE DIRECTOR

Dear PEP Families,

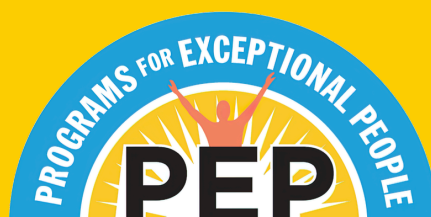
May is always such an exciting and busy time at PEP, and we have so much to look forward to together. Our Open House is just around the corner—less than three weeks away! We would love for our families to join us for this special time to connect, see our programs in action, and celebrate our community. If you're able, please consider bringing an appetizer to share. It always makes the event feel extra welcoming and festive.

As you continue through this newsletter, please be sure to scroll for details on our fall fundraiser, Boots, Barbeque & Oysters (10/17), which will take the place of our Gala this year. Our planning committee is already hard at work and excited to create something truly unique, fun, and memorable for everyone. If you're interested in joining the committee, securing a sponsor, or contributing auction item(s), we would love your support in making this event a success. Click **here** for all the forms.

A few additional reminders. Friday, May 22 will be a half day so our instructional staff can participate in an important afternoon training with the Lowcountry Autism Foundation (LAF). We are always grateful for opportunities to continue learning and growing as a team. Also, please take a moment to visit our website, www.pephhi.org, where you'll find updated PEP policies and helpful resources for families.

Thank you, as always, for being such an important part of the PEP family.

Warmly,
Nancy



MEMBER MEMORIES

In celebration of Earth Day, PEP members rolled up their sleeves and made a real impact at Fish Haul Beach, collecting an incredible 32 pounds of trash! Their efforts helped protect local wildlife, preserve the beauty of the shoreline, and show what community pride in action looks like. We are so proud of all of our members!



PEP provides programs that promote independence, social interaction, education, and employment opportunities for adults who live with unique intellectual, physical, and developmental disabilities.

WHO DO I CONTACT?

Need assistance? We've got you covered!

If you have any questions or concerns, give us a call at **(843) 681-8413** and ask for the appropriate admin. We're here to help and make sure you get the answers you need!

Administration Contact List

Name	Title	Email
Nancy Sulek	Executive Director	Nancy.Sulek@pephhi.org
Falisha Doublin	Program Director	Falisha.Doublin@pephhi.org
Carey Fortner	Administrative Assistant	Carey.Fortner@pephhi.org
Megan Drew	Compliance and Billing Specialist	Megan.Drew@pephhi.org
Ally Burnett	Program Administrator	Allison.Burnett@pephhi.org
Robert Mueller	Facilities and Transportation Manager	Robert.Mueller@pephhi.org
Akina Benton	Assistant Program Director	Akina.Benton@pephhi.org